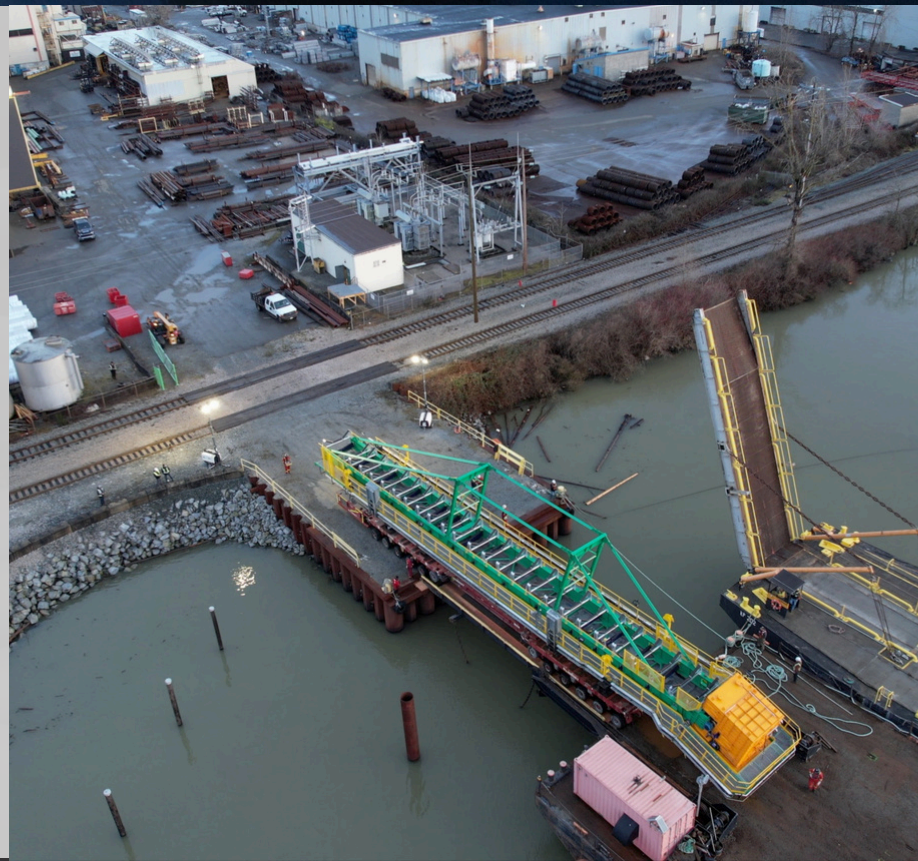




**DEEP WATER ACCESS**  
**PRIME LOCATION AND LOGISTIC SERVICES**

## **BARGE CAPACITY**

- Ocean access via the Fraser River
- Multiple water access points
- Local partnerships for reliable barging and logistics
- Access to coastal and ocean going tugs for large-scale barge operations
- Optimized for heavy ro-ro operations with deck or ramp barges



## **OUR MISSION**

To be the premier provider of high-quality steel fabrication solutions for complex industrial projects across North America.

## LOGISTICS

We deliver a wide range of projects with strong logistics, leveraging SPMTs, trailers, dollies, and heavy-load equipment to get every job done right. From planning to delivery, we make every move seamless.



**BARGE CAPACITY WITH DEEP-WATER ACCESS TO  
SUPPORT LARGE-SCALE PROJECTS**



## CONTACT US



(604) 525-5558  
sales@idealwelders.com  
www.idealwelders.com

## CENTRAL LOCATION

